



Surviving SLR Narrow Gauge Locomotives 2' 6"

The UPR (Nanu Oya to Ragala) line closed in 1948. The Kelani Valley line lost narrow gauge traction in 1996/7. The only remaining narrow gauge lines are around Shop 26 at Dematagoda, plus a running line used during the annual Deyata Kirula exhibition.

Information based on original list produced by David Hyatt Oct 2004, James Waite/Thomas Kautzor's visit Jan 2010, PTG tour Jan 2013, Clive Hepworth visit Feb 2013, info posted on Facebook late 2014, and LCGB tour Jan 2015.

The following information is provided in good faith after consultation with other knowledgeable enthusiasts, and any omissions or errors are purely mine.

Number	Type	Post-1937 Class	Date	Builder	Works Number	Current Location	Comments
							
106	4-4-0T	K1	1902	Hunslet	727	Dematagoda	Dumped incomplete, partly overgrown
							
							© Jan 2015 Robin Patrick
160	4-6-4T	J2b	1912	Hunslet	1082	Dematagoda	Dumped. Carries incorrect hand painted No.166
174	4-6-4T	J2a	1913	Hunslet	1122	Dematagoda	Dumped
176	4-6-4T	J2a	1913	Hunslet	1124	Dematagoda	Dumped



© Feb 2015 Manura Rupasinghe

177	4-6-4T	J2a	1913	Hunslet	1125	Dematagoda	Dumped with hand painted number
-----	--------	-----	------	---------	------	------------	---------------------------------



203	0-4-2T	L1b	1920	Hunslet	1406	Ratmalana Works	Plinthed. Sole surviving UPR loco
-----	--------	-----	------	---------	------	-----------------	-----------------------------------



220	4-6-4T	J1	1925	Hunslet	1478	Ratmalana Works	Cosmetic restoration for the new National Railway Museum
221	4-6-4T	J1	1925	Hunslet	1497	Dematagoda	Dumped
264	4-6-4T	J1a	1928	Hunslet	1584	Dematagoda	Dumped



© Jan 2015

Robin Patrick

292	4-6-4T	J1b	1929	Hunslet	1636	Dematagoda	Dumped with number plate
-----	--------	-----	------	---------	------	------------	--------------------------



331	A1-2G Railcar	V1	1928	Sentinel	7303	Shop 26 Dematagoda	Poor Condition. Cosmetic restoration for the new National Railway Museum
-----	---------------	----	------	----------	------	--------------------	--



332	A1-2G Railcar	V1	1928	Sentinel	7304	Shop 26 Dematagoda	Dumped
-----	---------------	----	------	----------	------	--------------------	--------



© Feb 2015 Manura Rupasinghe




333	A1-2G Railcar	V1	1928	Sentinel	7305	Shop 26 Dematagoda	Dumped
-----	---------------	----	------	----------	------	--------------------	--------



527	0-6-0 DM	P1	1950	Hunslet	4156	Kadugannawa	National Railway Museum
-----	----------	----	------	---------	------	-------------	-------------------------







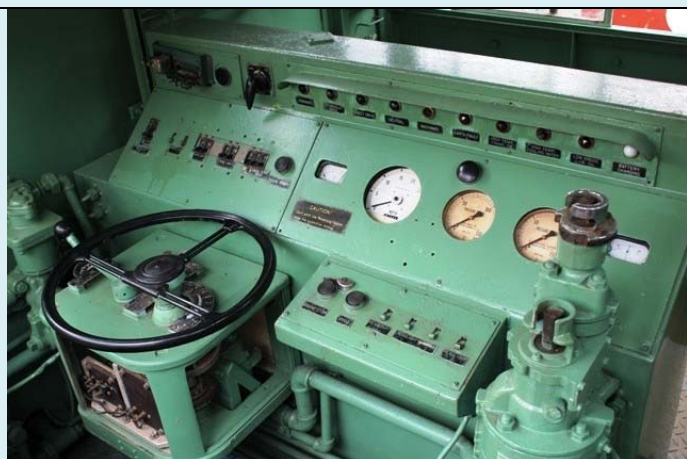
529	0-6-0 DM	P1	1950	Hunslet	4158	Shop 26 Dematagoda	Dumped
-----	----------	----	------	---------	------	--------------------	--------

							
530	0-6-0 DM	P1	1950	Hunslet	4159	Shop 26 Dematagoda	Only working locomotive left
							
564	2-6-2 DH	N1	1953	Krupp	3080	Shop 26 Dematagoda	Dumped
							
565	2-6-2 DH	N1	1953	Krupp	3081	Shop 26 Dematagoda	Dumped

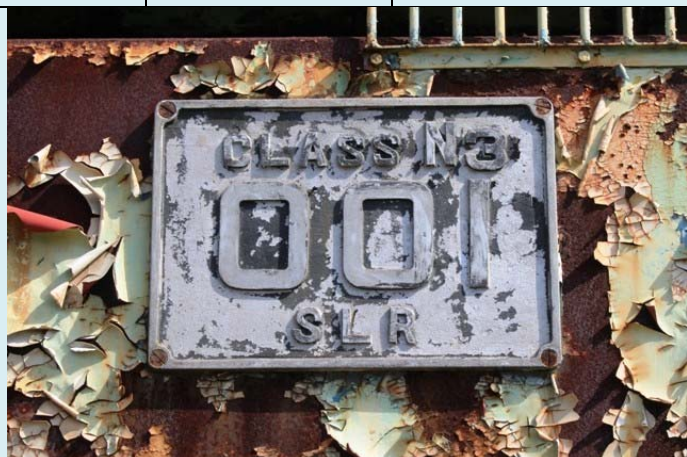
© Feb 2015

Manura
Rupasinghe

							
566	2-6-2 DH	N1	1953	Krupp	3082	Shop 26 Dematagoda	Cosmetic restoration for new Museum
							
568	2-6-2 DH	N1	1953	Krupp	3084	Shop 26 Dematagoda	Dumped
<div>   </div> <div>© Feb 2015 Manura Rupasinghe</div>							
731	B-B DH	N2	1973	Kawasaki	3779	Dematagoda	Dumped



732	B-B DH	N2	1973	Kawasaki	3780	Kadugannawa	National Railway Museum
-----	-----------	----	------	----------	------	-------------	----------------------------

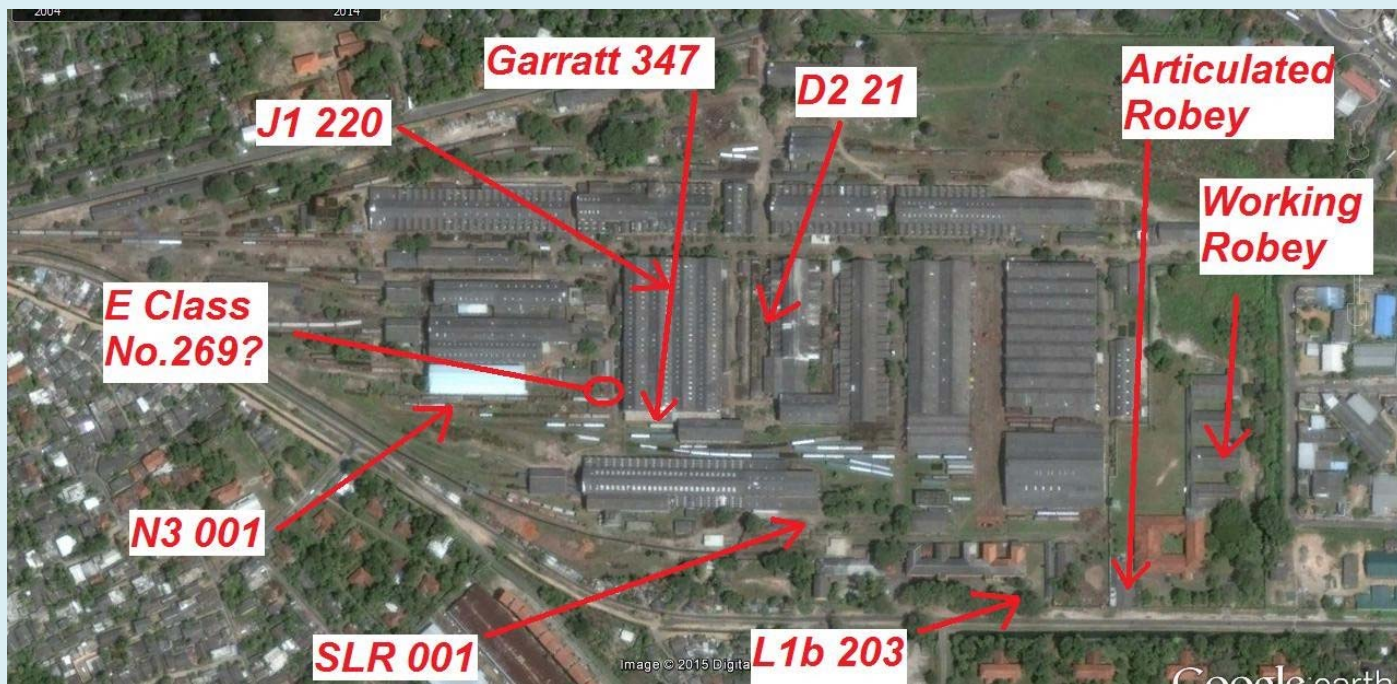


001	B-B E	N3	1991	Ratmalana Works		Ratmalana Works	Dumped incomplete. Originally N2 730. Converted to electric using an Alstom pantograph & traction motor from an M5
-----	-------	----	------	--------------------	--	--------------------	---

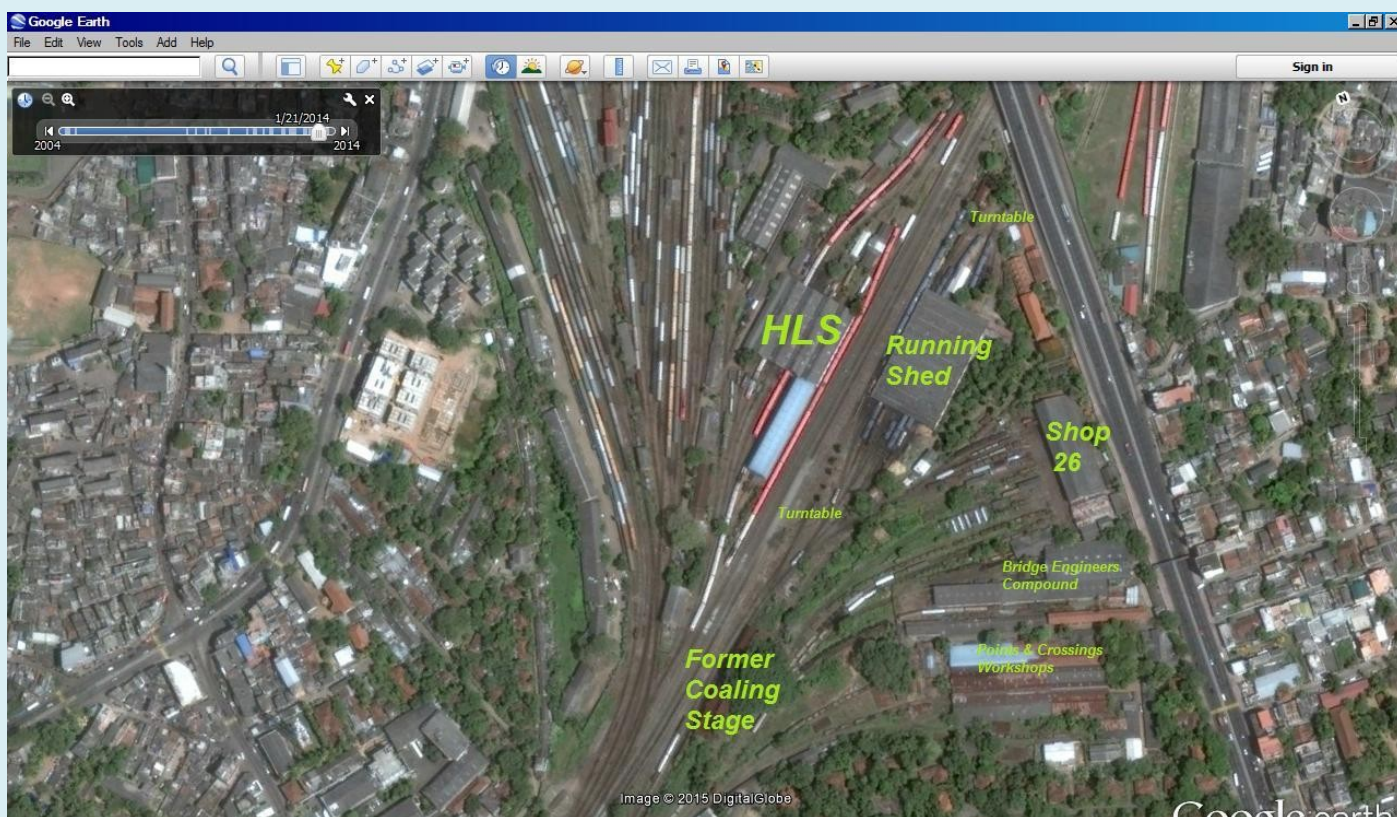


SLR 001	4-6-0		1999	Ratmalana Works		Ratmalana Works	(1'4 1/2" gauge) Quarter scale
293	2-4-0 +0-4-2	H1	1930	Beyer Peacock	6629	Dematagoda	Scrapped in 1980, some parts reported to remain but not seen in 2010 or later

NOTE: When the 7 J1/J2's were removed from the Running Shed and dumped outside a couple of the hand painted number boards were lost. Thus whilst their numbers are all known their exact location in the current line up has not been established. From Left to Right they are J2b No.160 (carries incorrect hand painted No.166 which was a Broad Gauge D2a), unidentified J2a, unidentified J1/J1a (facing the other direction & missing its bunker), unidentified J1/J1a, J2a No.177, unidentified J2a and J1b No.292



Ratmalana Works / German Railway Technical Training Center



Dematagoda

Images © Jan 2015 Chris Cairns, except where otherwise stated above

Chris Cairns, Glasgow, March 2015